

## INSTALLATION OF ROOF CONSOLE

NISSAN NAVARA NP300 DUAL CAB AND KING CAB 03/2015 on Code: RCNAVNP300

**WARNING:** We recommended an Auto Electrician connects console wiring in this installation as failure to connect wiring correctly, and tape up all connections as described in following instructions, may result in an electrical short and void console warranty.

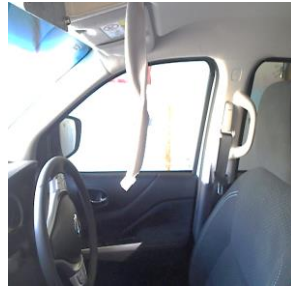
For this installation you will need a **long** Phillips screwdriver, **short** Phillips screwdriver, electric or battery drill, 'stubby' 3.2mm drill bit, steel ruler or Tape measure, electrical tape and Loctite. **Use Loctite on all console screws when installing.**

### **VEHICLE PREPARATION:**

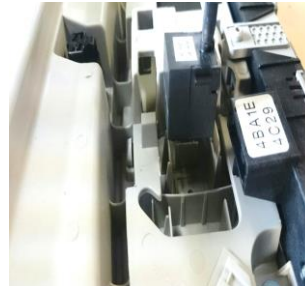
Remove front light pod from roof of vehicle; to do this, carefully pull down on one rear corner of light pod to unclip from roof, then pull down on the other rear corner. Pull down in centre of front edge and remove pod from cavity (1). Unplug light pod and Bluetooth wiring from harness. Tuck away light connector harness into roof cavity. Leave Bluetooth harness hanging from cavity (2). Push apart the two tabs that hold the Bluetooth microphone to the back of Light Pod and remove (3). Store Pod aside for refit to vehicle at a later date if required. Clean speaker outlet holes on console body with an alcohol based cleaning fluid and stick down foam block over Right hand side outlet. Insert Bluetooth Mic into Foam (4).



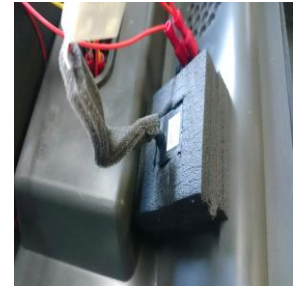
(1)



(2)



(3)



(4)

### **Front Mount Bracket installation:**

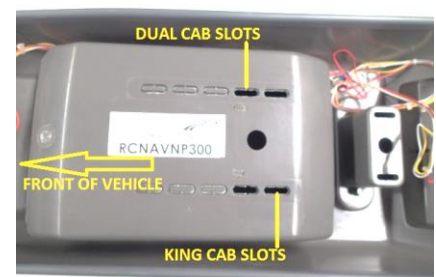
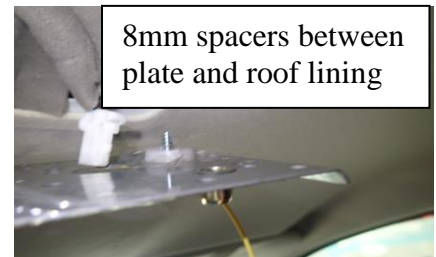
Hold front mount bracket into cavity opening with bracket pushed up against roof rib and front edge of cavity opening. Measure equal each side of front mount bracket in cavity from side to side, and mark the two holes on top fold to roof rib. With only 10mm of drill bit exposed from chuck, mark then drill two (2) 3.2mm holes into roof rib. Screw mount bracket onto roof rib with two (2) 10# x 12 self-tappers and a dab of Loctite or similar.



**Rear Mount Plate installation:** Prise off lens cover from centre interior light, remove 2 screws holding light to roof, disconnect wiring harness and remove light assembly from vehicle. Set aside for re-fit to vehicle upon removal of console. **Dual cabs:** captive nuts in plate facing **rearwards** and **downwards**. **King Cabs:** captive nuts in plate facing **forwards** and **downwards**. Poke centre interior light harness through Centre hole in mount plate and screw rear mount plate to roof rib holes using original screws (Add a dab of Loctite or similar to screws) and 2 of **8mm plastic spacers placed between plate and roof rib.**

**Attach yellow earth wire to one of these screws.**

**TIP:** Use clear sticky tape to hold spacers in position over holes on top of plate.



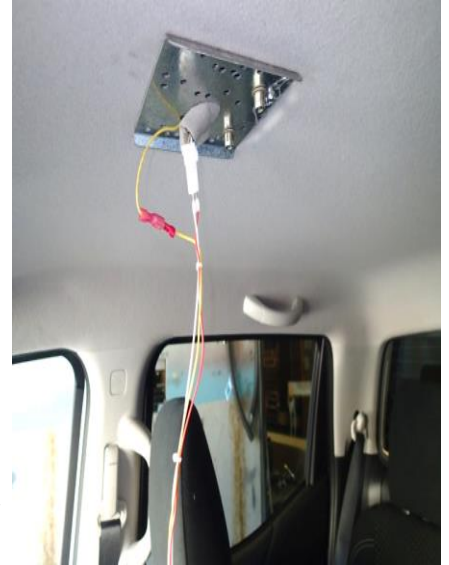
**INSTALLATION PREPARATION:** Connect console wiring extension supplied to console wiring loom; connect **red** to **red**, **white** to **white** and **yellow** to **yellow**. Tape up all connections.

**Comfortable work position:** Slide seats all way back; if right handed, sit in passenger seat; if left handed, sit in driver seat. An assistant will make installation much easier.

**Console and rear interior light wiring:** Stand console upright on front seat And plug console wiring into rear lighting harness. **Push Red wire pin into Blue terminal, White wire pin into Brown terminal, and Yellow wire into Yellow terminal earthed to rear mount plate screw.**

**Tape up all wires to connector block.**

Close doors and test console lights. There is an 'on/off' switch located above radio opening, when switch is '**off**' it acts as a kill switch-- no lights will work. When switch is '**on**', lights will work independently as map/interior lights when doors are shut and door timer switches off. When doors are opened lights will work as door/interior lights. Note: door timer takes approx 25 seconds to complete cycle.



### **CONSOLE INSTALLATION:**

Hold console up and connect Bluetooth wiring harness to pick-up microphone. Position console **over Front Mount Bracket** ensuring bracket fits between inside front of console and radio surround/storage tray. Tuck wiring loom out of way so as not to jam between console body and rear mount plate. **Open locker box** and look up inside. Line up slotted rear mounting holes with captive nuts in Rear Mount Plate, and **loosely fasten console** up to the captive nuts in Rear Mount Plate using the two (2) **6mm x 30mm** screws and large flat washers on **dual cabs**, and **6mm x 20mm** screws and large washers on **King cab vehicles**.

Push up firmly on front of console and **finger fasten** front of console to Front Mount Bracket using the two 6mm x 16mm **black** Phillips head screws supplied. Apply 'Loctite' one at a time to all screws once console is in position. Do screws up tight using **short** Phillips screwdriver.

**NOTE:** Only tighten rear bolts up firm so console is held to roof. **DO NOT** tighten so as to bend rear mount plate downwards; do rear bolts up with equal tension.

Open Locker Box and remove Microphone Cable Holder and Rear Mounting Hole Cover from inside; fasten Hole Cover in place using screws supplied. Fasten Microphone Cable Holder in place as per radio installation instructions.

### **Fit Kit: RCNAVNP300**

- One (1) Front Mount Bracket
- One (1) Rear Mount Plate
- One (1) Console wiring adaptor
- One (1) Yellow Earth Wire
- Two (2) 8mm thick plastic spacers
- Two (2) 10# x 12mm Phillips self tapping screws
- Two (2) 6mm x 16mm **black** Phillips round head bolts
- Two (2) 6mm x 30mm Phillips round head bolts
- Two (2) 6mm x 20mm Phillips round head bolts (King cab only)
- Two (2) 6mm Diameter large flat washers
- Three (3) x 100mm Sticky back foam piece
- One (1) Sticky backed foam Bluetooth Pick-up holder

# RADIO INSTALLATION

Radio Insert Installation: for smaller size radios

**PLEASE NOTE: Radio Inserts NOT INCLUDED.**

Decorative side of insert faces outwards and snaps out over bottom of tray surround.

To install insert, squeeze top and bottom together; push/bend sides and squeeze into tray surround from inside to outside until bottom lip on decorative side of insert snaps/pops out over bottom of tray surround, prize with fingers to ensure bottom lip of insert is in place over tray surround as described. **Do not** scratch or mark insert or surround by prising/levering with tools; use hands/fingers only.



## Radio Installation:

Place protective cover on work bench to avoid scratching console. Place console on protective cover and using a sharp knife cut a 30mm x 100mm section out of storage tray 25mm in from where rear of radio will be when installed. Use a small amount of methylated spirits on a clean cloth to clean exposed part of console and bottom rear of radio.



Peel one side of protective backing from foam strip supplied; apply pressure with palm of hand to adhere foam to exposed part of console. Peel backing off other side of foam strip and add one or more strips of foam to suit different size radios (see chart below). This will keep radio level with bottom of surround.



Insert radio on an angle until radio protrudes 15mm out over bottom of tray surround or insert and straighten; lay flat onto sticky back foam and apply firm pressure to top of radio with palm of hand for 30 seconds to ensure good adhesion.



## Sticky back foam chart:

- One (1) strip- standard size radios
- Two (2) strips- Icom and Uniden
- Three (3) strips- GME Electrophone

## Microphone and Microphone Cable Holder installation:

Install in a position that suits best, depending on vehicle and Radio model. Ensure microphone or microphone cable and holder does not foul on sun visor when pulled down.



Microphone clip on slight angle



Left hand cable outlet radios



Microphone clip on acute angle