

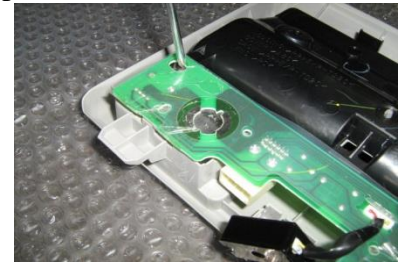
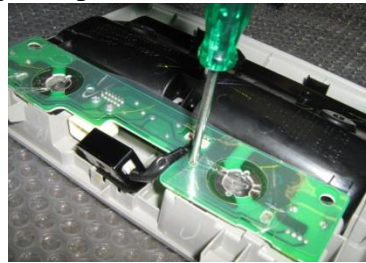
INSTALLATION OF ROOF CONSOLE

PART NO: RCHI05

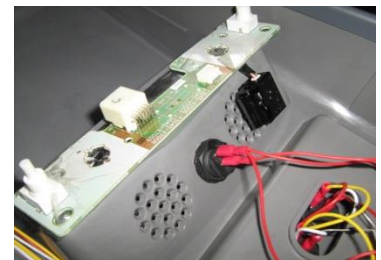
Installation of Hilux 2011- 09/2015 with Front Light Pod and Bluetooth Microphone

Addition to RCHI05 instructions below:

Remove factory light pod & sun glasses holder from roof. To do this, open sun glasses case and remove two (2) Phillips head screws. Slide thin lever tool (steel ruler or similar) between console and roof lining, lever downwards and prise out from roof lining. Unplug wiring connector block from printed circuit board. Remove the Four (4) screws holding the printed circuit board to Pod. Gently prise back tabs on light pod to release board. Gently prise out Bluetooth pick up Mic from Pod. Put light pod and screws aside in a safe place for refit upon sale of vehicle.



Bluetooth attachment to console: clean inside surface of console with White spirit or similar where Velcro tape will be adhered to and stick Velcro tape to top of radio opening and to right hand side of console speaker grille. Remove other backing strip from Velcro and press circuit board to Velcro tape with connector opening facing forward. Tilt Bluetooth speaker over console grille hole and press Bluetooth body to Velcro tape.



Front Mount Bracket Installation: Remove sun visor clips and put aside. Screw drilling template to sun visor clip locating holes (small round hole) using the 12# x 20mm screws supplied. Insert 'stubby' 3.5mm drill bit into electric drill **ensuring only 20mm of drill bit is protruding out of drill chuck.** Drill two holes through the vacant holes in drilling template, through the hood lining and into inner skin of roof. **NOTE: you are only drilling into the inner skin not the roof itself.**

Remove drill template and return sun visor clips to position using original screws. Using the two 12# x 20mm self tapping screws supplied fasten **grey powder coated front mount bracket supplied** to roof ensuring captive nuts face **rear** of vehicle (refer pic below).



Failure to connect coloured wiring correctly and tape up all connections as described in the following instructions could result in an electrical short and void console warranty.

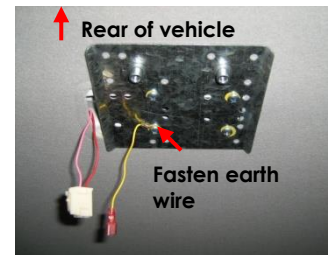
For this installation you will need a **long** Phillips screwdriver, **short** Phillips screwdriver, 3.5mm ‘stubby’ drill bit, electric drill, electrical insulation tape and Loctite. **Use Loctite on all console screws when installing.** All fixing plates, brackets, fixing screws supplied in fit kit.

VEHICLE PREPARATION:

Swing sun visors around to side and lay flat to roof for ease of installation.

Switch interior light to ‘off’ position, remove from roof and unplug wiring. Put light and screws aside in a safe place for refit upon removal of console.

Rear Mount Plate Installation: Using a **hand held Phillips** screwdriver, fasten Rear Mount Plate to four vacant interior light screw holes. Fasten plate through **marked** holes ensuring captive nuts are to **rear** of vehicle and interior light plug protrudes out one side of plate. Use the four 10# x 12mm screws supplied to fasten plate with yellow earth wire supplied to one of these screws.



NOTE: FOR FRONT MOUNT BRACKET INSTALLATION USE:
Small rectangle bracket 2005--09/11 models no light pod fitted
Large ‘T’ shaped bracket 09/11--09/15 models with light pod/Bluetooth

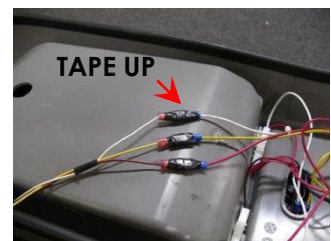
Front Mount Bracket Installation: Remove sun visor clips and put aside. Screw drilling template to sun visor clip locating holes (small round hole) using the 12# x 20mm screws supplied. Insert ‘stubby’ 3.5mm drill bit into electric drill **ensuring only 20mm of drill bit is protruding out of drill chuck.** Drill two holes through the vacant holes in drilling template, through the hood lining and into inner skin of roof. **NOTE: you are only drilling into the inner skin not the roof itself.** To cover these holes upon removal of console, two decorative plastic screw caps and washers have been supplied (put aside with interior light).



Remove drill template and return sun visor clips using original screws. Using the two 12# x 20mm self tapping screws supplied, fasten front mount bracket to roof ensuring captive nuts face **rear** of vehicle.



Installation Preparation: Connect console wiring extension supplied to console wiring loom, connect **red** to **red**, **yellow** to **yellow** and **white** to **white**. Tape up all connections.

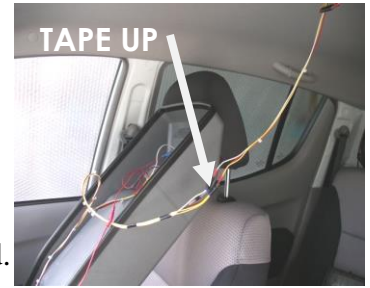


Use ‘Blu-Tack’ supplied to adhere one of the 6mm x 20mm round head bolts to **long** Phillips screw driver and put a small amount of ‘Loctite’ on thread then store in convenient location, e.g. on seat of vehicle or in/on centre console.

Comfortable work position: Slide seats all way back, if right handed - sit in passenger seat, if left handed - sit in driver seat.

CONSOLE INSTALLATION:

Stand console upright on front seat and plug console wiring into interior light plug of vehicle. Plug **white** wire of console into **pink** wire of interior light plug, **red** into **red** wire and **yellow** into **yellow** earth wire fastened to Rear Mount Plate. Check that console lights work independently once doors are shut and timer switches off, then tape up to ensure wires do not become disconnected.



There is an **'on/off'** switch located above radio opening. When **'off'** it acts as a kill switch-- no lights will work. When **'on'** lights work independently as map/interior lights when doors are shut and timer switches off. When doors are opened lights will work as door/interior lights.

Hold console up in position **over Front Mount Bracket** ensuring mount bracket is between front of console and rear of radio surround/storage tray. Look up under rear mounting hole; line up captive nuts in Rear Mount Plate with slotted fastening holes, tuck wiring loom out of way so as not jam between console body and Rear Mount Plate. **Loosely** fasten console up to one of the captive nuts in Rear Fixing Plate using the 6mm x 20mm round Phillips head bolt 'Blu-Tacked' to Phillips screw driver.

On Bluetooth fitted vehicles, connect front light pod wiring harness to circuit board attached to console body **before finger tightening front bracket screws.*

Finger fasten front of console to Front Mount Bracket using the two 6mm x 16mm **black** Phillips head bolts supplied; to do this push up firm on front of console, do bolts up tight using **short** Phillips screwdriver.

Blu-Tack other 6mm x 20mm round Phillips head bolt onto screw driver, apply 'Loctite' and fasten into Rear Mount Plate; Now tighten all bolts. **NOTE:** *Only tighten rear bolts up firm so console is held to roof. **DO NOT** tighten so as to bend rear mount plate downwards; do rear bolts up with equal tension.*

Open Locker Box and remove Microphone Cable Holder and Rear Mounting Hole Cover from inside. Fasten Hole Cover in place using screws supplied. Fasten Microphone Cable Holder in a convenient location (as per radio installation instructions attached). Ensure microphone position does not foul on sun visor when visor pulled downwards

Fit Kit: RCHI05:

- One (1) Small Front Mount Bracket
- One (1) Large 'T' Front Mount Bracket
- One (1) Rear Mount Plate (colour marked)
- One (1) Drilling template
- One (1) Console wiring extension
- One (1) Yellow earth wire
- Four (4) 10# x 12mm Phillips self tapping screws
- Two (2) 12# x 20mm Phillips self tapping screws
- Two (2) 6mm x 20 mm Phillips round head bolts
- Two (2) 6mm x 16mm **black** Phillips round head bolts
- Two (2) plastic snap cap washers
- Two (2) plastic snap caps (grey)
- One (1) Piece of 'Blu-Tack'
- Three (3) 100mm pieces sticky back foam
- Three (3) Pieces Velcro tape (Bluetooth* installation)

RADIO INSTALLATION

Radio Insert Installation: for smaller size radios

PLEASE NOTE: Radio Inserts NOT INCLUDED.

Decorative side of insert faces outwards and snaps out over bottom of tray surround.

To install insert, squeeze top and bottom together; push/bend sides and squeeze into tray surround from inside to outside until bottom lip on decorative side of insert snaps/pops out over bottom of tray surround, prize with fingers to ensure bottom lip of insert is in place over tray surround as described. **Do not** scratch or mark insert or surround by prising/levering with tools; use hands/fingers only.

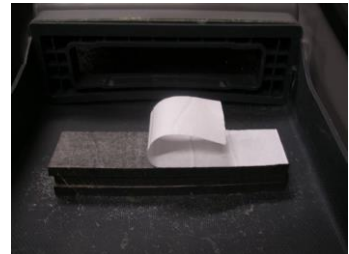


Radio Installation:

Place protective cover on work bench to avoid scratching console. Place console on protective cover and using a sharp knife cut a 30mm x 100mm section out of storage tray 25mm in from where rear of radio will be when installed. Use a small amount of methylated spirits on a clean cloth to clean exposed part of console and bottom rear of radio.



Peel one side of protective backing from foam strip supplied; apply pressure with palm of hand to adhere foam to exposed part of console. Peel backing off other side of foam strip and add one or more strips of foam to suit different size radios (see chart below). This will keep radio level with bottom of surround.



Insert radio on an angle until radio protrudes 15mm out over bottom of tray surround or insert and straighten; lay flat onto sticky back foam and apply firm pressure to top of radio with palm of hand for 30 seconds to ensure good adhesion.



Sticky back foam chart:

- One (1) strip- standard size radios
- Two (2) strips- Icom and Uniden
- Three (3) strips- GME Electrophone

Microphone and Microphone Cable Holder installation:

Install in a position that suits best, depending on vehicle and Radio model. Ensure microphone **or** microphone cable and holder does not foul on sun visor when pulled down.



Microphone clip on slight angle



Left hand cable outlet radios



Microphone clip on acute angle